

**FLOOR-EQUIPMENT-PARTS.COM**



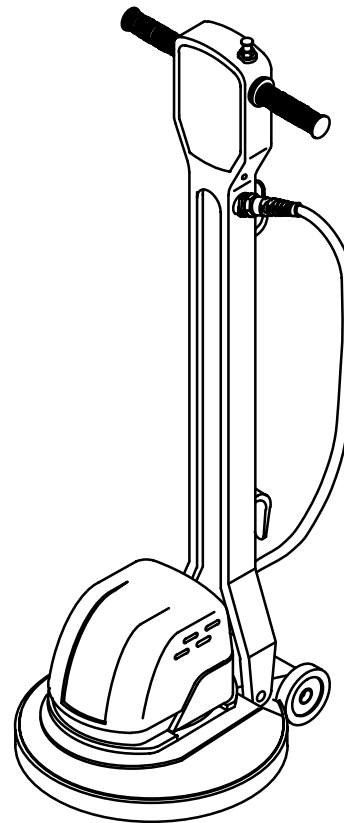
# 2000/2010/2030 2040/2160/2170

Floor Machine  
Máquina para pisos

**Model No.:**

- 609671 – 2000 (120V/60HZ)
- 609622 – 2010 (120V/60HZ) HD
- 609784 – 2010 (240V/50HZ) HD
- 609621 – 2010 (230V/60HZ) HD
- 613739 – 2010 (220V/60HZ) HD
- 609672 – 2030 (120V/60HZ)
- 609624 – 2040 (120V/60HZ) HD
- 609786 – 2040 (230V/50HZ) HD
- 609664 – 2040 (220V/60HZ) HD
- 613738 – 2040 (220V/60HZ) HD
- 607642 – 2160 (120V/60HZ) DS
- 607643 – 2170 (120V/60HZ) DS
- 609665 – 2170 (230V/60HZ) DS

**Operator and Parts Manual  
Manual del Operador y Piezas**



**TENNANT COMPANY**  
Commercial Products  
12875 RANSOM STREET  
HOLLAND MI 49424 U.S.A.

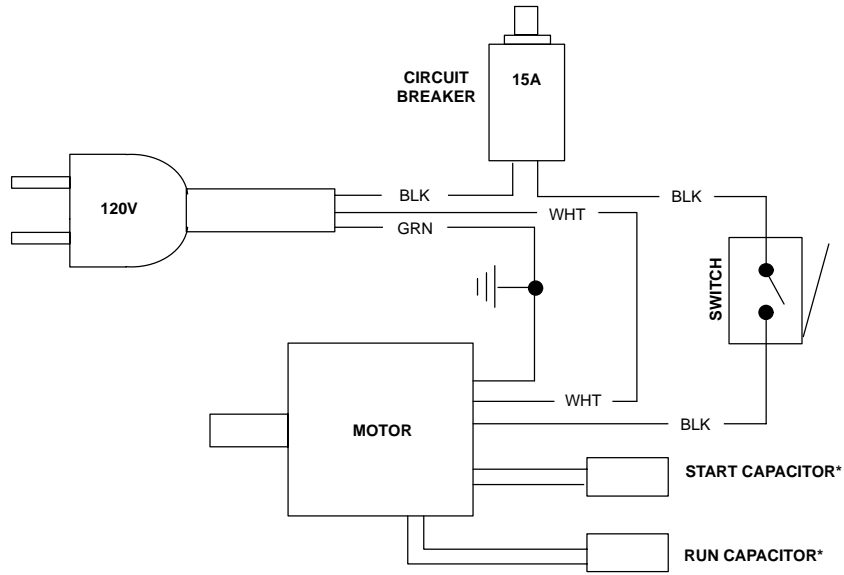
**CUSTOMER SERVICE:**  
1-800-982-7658  
1-616-786-2330

**FAX:** 1-800-678-4240  
1-616-786-2345

**607644  
Rev. 04 (10-02)**

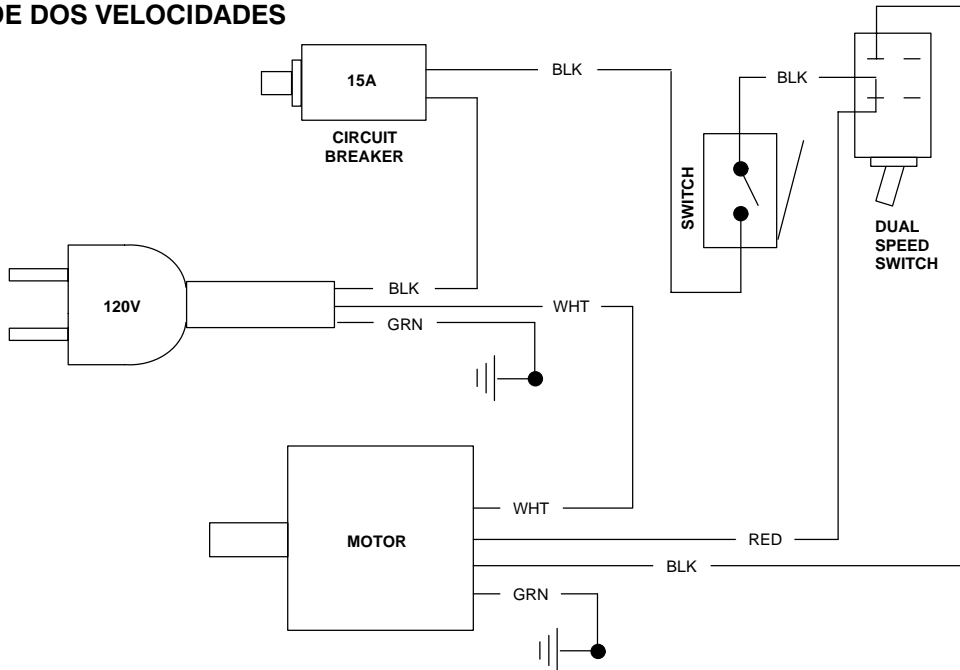
# ELECTRICAL DIAGRAMS DIAGRAMAS ELECTRICAS

## SINGLE SPEED – 120V MODELOS DE UNA VELOCIDAD

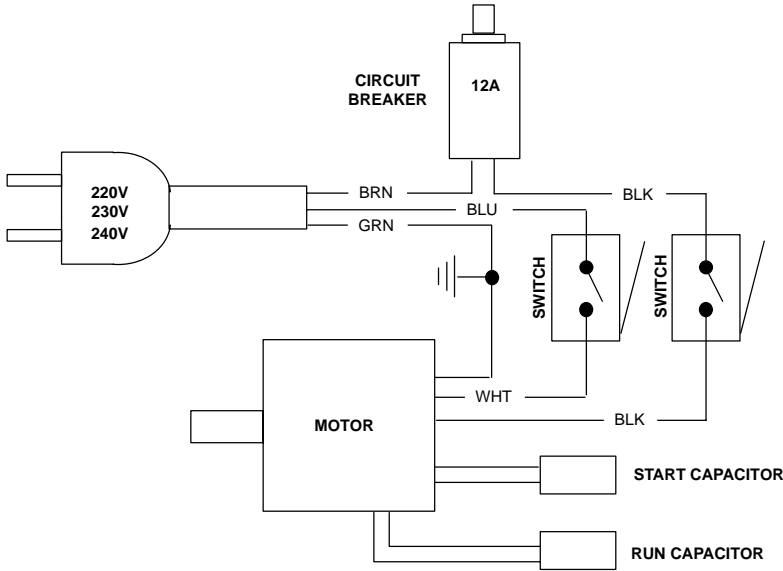


\*1.5HP MODEL ONLY

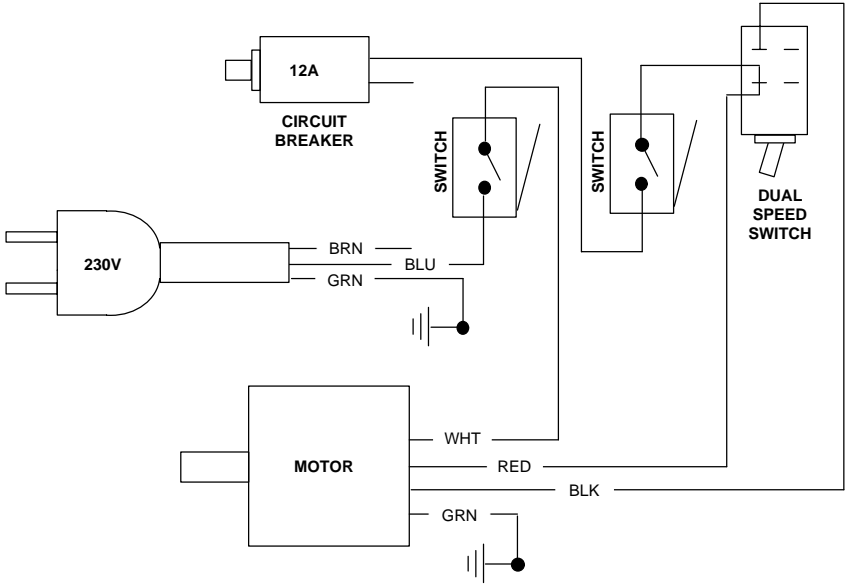
## DUAL SPEED – 120V MODELOS DE DOS VELOCIDADES



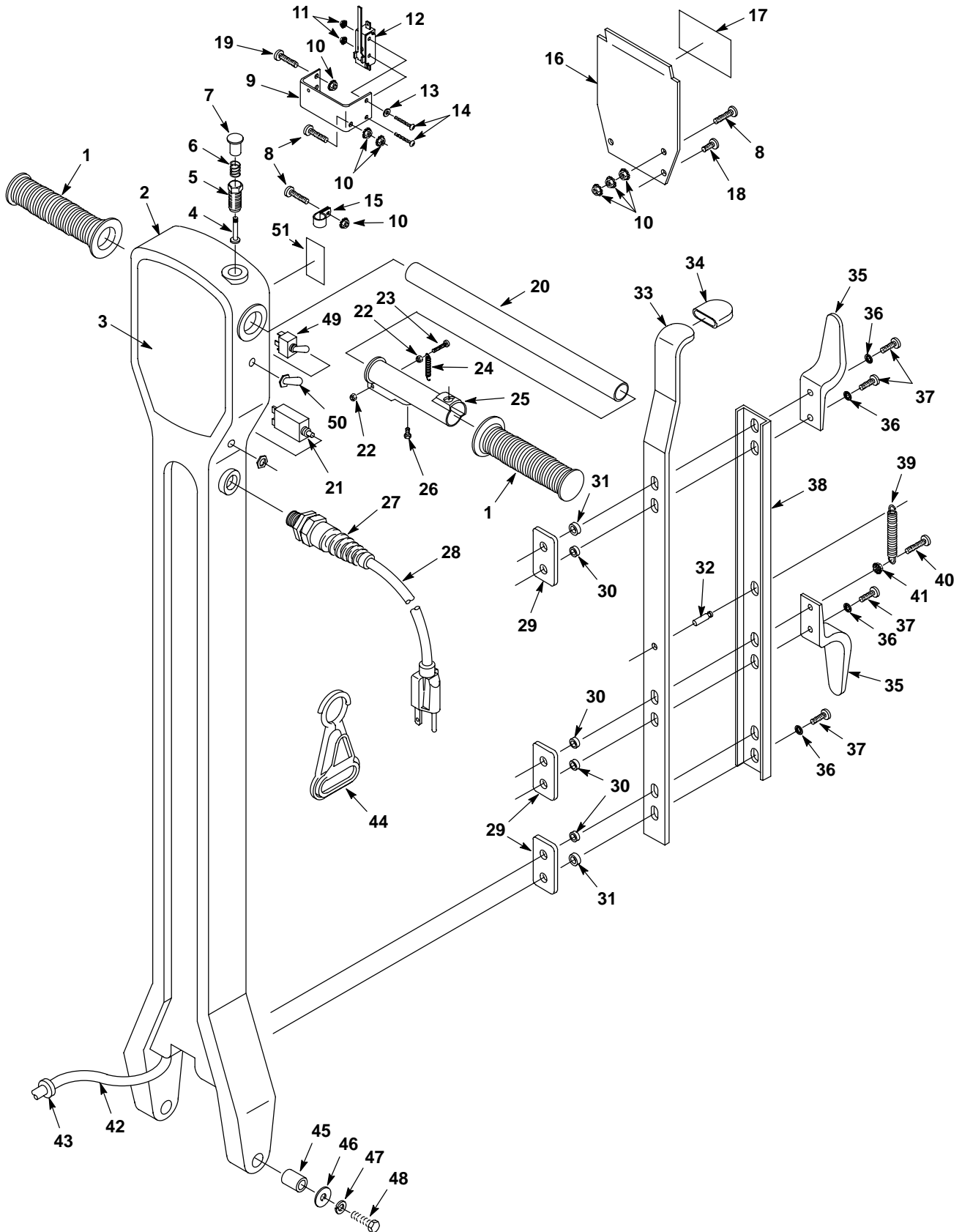
**SINGLE SPEED – 220V/230V/240V**  
**MODELOS DE UNA VELOCIDAD**



**DUAL SPEED – 230V**  
**MODELOS DE DOS VELOCIDADES**



HANDLE GROUP  
GRUPO DEL ASA



**HANDLE GROUP**  
**GRUPO DEL ASA**

REF	PART #	DESCRIPTION	QTY.
1	200823	GRIP, HANDLE TUBE	2
2	607637	HANDLE, OFF-WHITE (2000/2010/2030/2040)	1
	607692	HANDLE, DS, OFF-WHITE (2160/2170)	1
3	608121	LABEL, TENNANT 2000	1
	609058	LABEL, TENNANT 2010	1
	609059	LABEL, TENNANT 2030	1
	608123	LABEL, TENNANT 2040	1
	609148	LABEL, TENNANT 2160	1
	609149	LABEL, TENNANT 2170	1
4	230856	PIN, LOCK RELEASE	1
5	230857	SOCKET, LOCK	1
6	140401	SPRING, LOCK BUTTON	1
7	230855	BUTTON, LOCK RELEASE	1
8	140900	SCREW, #10-24X3/4	3
9	230854	BRACKET, SWITCH	1
10	140519	NUT, #10-24	8
11	140539	NUT, #6-32	2
12	605407	●SWITCH (120V)	1
	605407	●SWITCH (220V/230V/240V)	2
13	140032	WASHER, #6 FLAT	1
14	140829	SCREW, #6-32X1 (120V)	2
	140830	SCREW, #6-32X1-5/8 (220V/230V/240V)	2
15	140324	CLAMP, CABLE 5/16 ID BLK NYLON (SINGLE SPD & HD MODELS)	1
	140328	CLAMP, CABLE 3/8ID BLK NYLON (DUAL SPD MODEL)	1
16	609700	PLATE, HANDLE REAR	1
17	613286	LABEL, WARNING	1
18	140197	SCREW, 10-24X3/8 TRSPHL SEM	2
19	140823	SCREW, 10-24X5/8 PHL	2
20	230853	HANDLE, TUBE	1
21	605197	●BREAKER, CIRCUIT 15A (120V)	1
	130670	●BREAKER, CIRCUIT 12A (220V/230V/240V)	1
22	28990	NUT, 8-32 NYLOCK	2

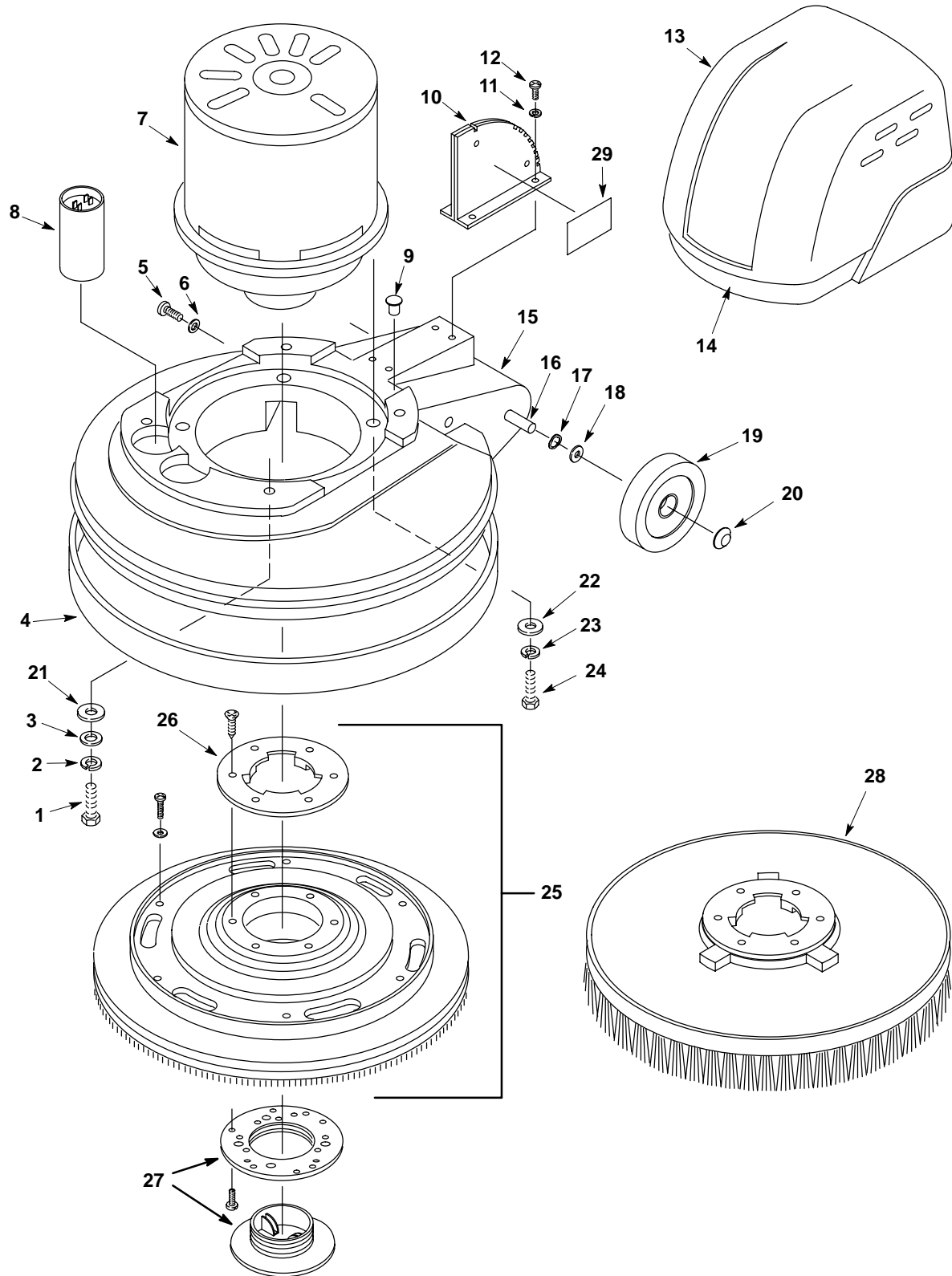
REF	PART #	DESCRIPTION	QTY.
23	6010.16	SCREW, 8-32X1	1
24	600987	SPRING	1
25	100355	SLEEVE, LOCKING	1
26	140259	SCREW, HEX .25-20X.62	1
27	602849	●GRIP, CORD (120V)	1
	130167	●GRIP, CORD (220V/230V/240V)	1
28	602747	●CORD, 14/3X50' YELLOW (120V)	1
	600324	●CORD, 3X1.5MM2X15M BLACK (220V/230V/240V)	1
29	230852	PLATE, BACKING	3
30	140147	SLEEVE, .25X.44X.20	4
31	140146	SLEEVE, .25X.50X.19	2
32	140604	PIN, GROOVE 1/4X3/4	1
33	611141	LATCH, HANDLE	1
34	200821	GRIP, LATCH	1
35	602750	HOOK, CORD	2
36	140052	WASHER, 1/4 EXT	5
37	140864	SCREW, 1/4-20X3/4	5
38	230859	CHANNEL, LATCH HANDLE	1
39	140402	SPRING, HANDLE LATCH	1
40	140881	SCREW, 1/4-20X1	1
41	140524	NUT, 1/4-20 KEP	1
42	130204	CORD, 14/3X57" BLACK (SINGLE SPD & HD MODELS)	1
	130203	CORD, 14/4X57" BLACK (DUAL SPD MODEL)	1
43	130141	BUSHING, STRAIN-RELIEF	1
44	130176	●BELT CLIP, STRAIN-RELIEF (OPTIONAL)	1
45	140148	SLEEVE, .625DX1.4L	2
46	3148.816	WASHER, FLAT	2
47	140024	WASHER, LOCK	2
48	140235	SCREW, 1/2-13X2 HXHDCP	2
49	130726	SWITCH, TOGGLE (DUAL SPD MODELS)	1
50	130990	BOOT, RUBBER SWITCH BLACK (DUAL SPD MODELS)	1
51	120675	LABEL, OPERATION (DUAL SPD MODELS)	1

▽ ASSEMBLY / CONJUNTO

▲ INCLUDED IN ASSEMBLY / INCLUIDO EN EL CONJUNTO

● RECOMMENDED STOCK ITEMS / ARTICULOS RECOMENDADOS PARA  
MANTENER EN EXISTENCIA

BASE GROUP  
GRUPO BASE



**BASE GROUP**  
**GRUPO BASE**

REF	PART #	DESCRIPTION	QTY.
1	140255	SCREW, 1/4-20X1.75	4
2	140016	WASHER, LOCK	4
3	140000	WASHER, FLAT	4
4	602543	BUMPER, (17" MODELS)	1
	602545	BUMPER, (20" MODELS)	1
5	140852	SCREW, #12X3/4 SHTMETL PNP HL (17" MODELS)	2
	140824	SCREW, 1/4-20X5/8 TRSPHL (20" MODELS)	2
6	019680127	WASHER, FLAT (17" MODELS)	2
	140003	WASHER, FNDR (20" MODELS)	2
∇ 7	130497	MOTOR, 120V/60HZ, 1 HP (2000/2030)	1
▲	130465	COUPLING, MOTOR	1
▲ 8	130762	●CAPACITOR, START (BLACK)	1
	606243	TAPE, DBL STICK 1"X0.170 FT.	2
∇ 7	130451	MOTOR, 120V/60HZ 1.5 HP (2010/2040)	1
▲	130465	COUPLING, MOTOR	1
▲ 8	605286	●CAPACITOR, RUN (SILVER)	1
	130762	●CAPACITOR, START (BLACK)	1
	606243	TAPE, DBL STICK 1"X0.170'	3
∇ 7	130494	MOTOR, 120V (2160/2170)	1
▲	190742	●CARBON BRUSH CARD ASM.	1
▲	22117	●CARBON BRUSH	4
▲	190753	●RECTIFIER, 120V	1
▲	190744	●CONTROL, SPEED 120V	1
▲	515021	●HOLDER	1
∇ 7	600807	MOTOR, 220V/230V/240V/50HZ, 1.5 HP (2010/2040)/613738-2040	1
∇ 7	600808	MOTOR, 220V/230V/60HZ, 1.5 HP (2010/2040)	1
▲ 8	605286	●CAPACITOR, RUN (SILVER) (2010/2040)	1
	130762	●CAPACITOR, START (BLACK) (2010/2040)	1
	606243	TAPE, DBL STICK 1"X0.170'	3
∇ 7	130488	MOTOR, 1800/3200 230V-DS (DUAL SPD 2170 MODEL)	1
▲	600281	●CARBON BRUSH CARD ASM.	1
▲	190311	●CARBON BRUSH	4
▲	190312	●RECTIFIER, 230V	1
▲	190745	●CONTROL, SPEED 230V	1
9	130198	PLUG	1
10	611133	PLATE, LATCH	1

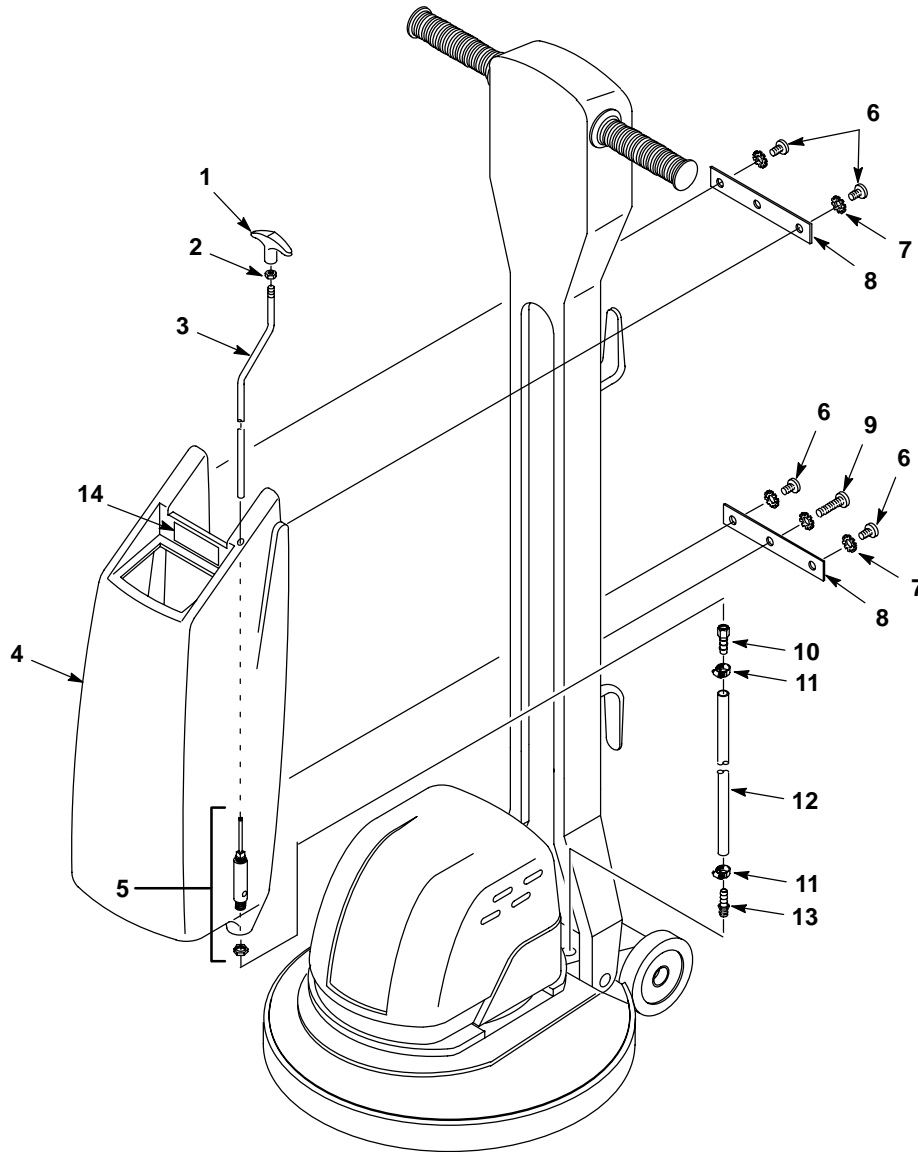
REF	PART #	DESCRIPTION	QTY.
11	140015	WASHER, LOCK	4
12	140226	SCREW, 5/16-18X.625	4
13	<del>607638</del>	COVER, MOTOR, TEAL <b>607635</b>	1
14	120582	DECAL, RECESS	1
15	607641	BASE, TEAL, (2000/2010/2160)	1
	607633	BASE, TEAL, (2040/2130/2170)	1
16	608909	AXLE, 1/2X10.040"	1
17	4252	WASHER, COMP.	2
18	3148.816	WASHER, FLAT	2
19	103066	●WHEEL, 4"X1.5 GRAY	2
20	103019	CAP, HUB	2
21	140027	WASHER, FLAT .31	4
22	140003	WASHER, 1/4X1 FNDR (SINGLE SPD & HD MODELS)	8
	140046	WASHER, 1.00X.392X.090 FLAT (DUAL SPD MODELS)	4
23	140016	WASHER, LOCK SPLIT 0.25 (SINGLE SPD & HD MODELS)	4
	140015	WASHER, LOCK SPLIT 0.31 (DUAL SPD MODELS)	4
24	140212	SCREW, 1/4-20X1-1/2 HXHDCP (SINGLE SPD & HD MODELS)	4
	140216	SCREW, 5/16-18X1-1/2 HXHDCP (DUAL SPD MODELS)	4
∇ 25	605124	ASM., PAD DRIVER 432MM (17") SINGLE SPD & HD MODELS (OPT.)	1
	605123	ASM., PAD DRIVER 508MM (20") SINGLE SPD & HD MODELS (OPT.)	1
	603537	ASM., PAD DRIVER 432MM (17") DUAL SPD MODELS (OPTIONAL)	1
	605225	ASM., PAD DRIVER 508MM (20") DUAL SPD MODELS (OPTIONAL)	1
	600255	BLOCK, WOOD SANDING 432MM (17") SINGLE SPD (OPTIONAL)	1
	600256	BLOCK, WOOD SANDING 508MM (20") SINGLE SPD (OPTIONAL)	1
▲ 26	603539	PLATE, CLUTCH PLASTIC	1
27	603538	●LOCK, CENTER (OPTIONAL)	1
28	240255	BRUSH, DYNA-SCRUB 432MM (17") SINGLE SPD (OPTIONAL)	1
	240257	BRUSH, DYNA-SCRUB 508MM (20") SINGLE SPD (OPTIONAL)	1
	240256	BRUSH, STRATA-GRIT 432MM (17") SINGLE SPD (OPTIONAL)	1
	240258	BRUSH, STRATA-GRIT 508MM (20") SINGLE SPD (OPTIONAL)	1
	605117	BRUSH, ROTARY SHOWERFEED 432MM (17") SINGLE SPD (OPT.)	1
	605118	BRUSH, ROTARY SHOWERFEED 508MM (20") SINGLE SPD (OPT.)	1
29	120619	LABEL, WARNING	1

∇ ASSEMBLY / CONJUNTO

▲ INCLUDED IN ASSEMBLY / INCLUIDO EN EL CONJUNTO

● RECOMMENDED STOCK ITEMS / ARTICULOS RECOMENDADOS PARA MANTENER EN EXISTENCIA

SOLUTION TANK GROUP  
GRUPE DEL DEPÓSITO DE DISOLUCIÓN



HAWK GRAY

REF	PART #	DESCRIPTION	QTY.
190123	▽ 609968	ASM., SOLUTION TANK, <del>TEAL</del>	1
	▲ 1 240194	KNOB, HEIGHT ADJ.	1
	▲ 2 140548	NUT 5/16	1
	▲ 3 230399	ROD, VALVE SOLUTION TANK	1
611864	▲ 4 609967	TANK, SOLUTION, <del>TEAL</del> HG	1
	▲▽ 5 700197	ASM., VALVE	1
	▲ 210216	VALVE, W/ NUT & O-RING	1
	▲ 210218	O-RING SEAL FOR VALVE	1
	▲ 6 140885	SCREW, TRS 1/4-20X1/2 PHL	4

REF	PART #	DESCRIPTION	QTY.
	▲ 7 140052	WASHER, LOCK EXT. .25	5
	▲ 8 230475	BRACKET, SOLUTION TANK	2
	▲ 9 140881	SCREW, 1/4-20X1	1
	▲ 10 150511	FITTING	1
	▲ 11 140305	CLAMP, HOSE	2
	▲ 12 606667	HOSE 3/8 ID X 10"	1
	▲ 13 150516	FITTING	1
	▲ 14 610722	DECAL, WARNING FLAMMABLE	1

▽ ASSEMBLY / CONJUNTO

▲ INCLUDED IN ASSEMBLY / INCLUIDO EN EL CONJUNTO

● RECOMMENDED STOCK ITEMS / ARTICULOS RECOMENDADOS PARA MANTENER EN EXISTENCIA